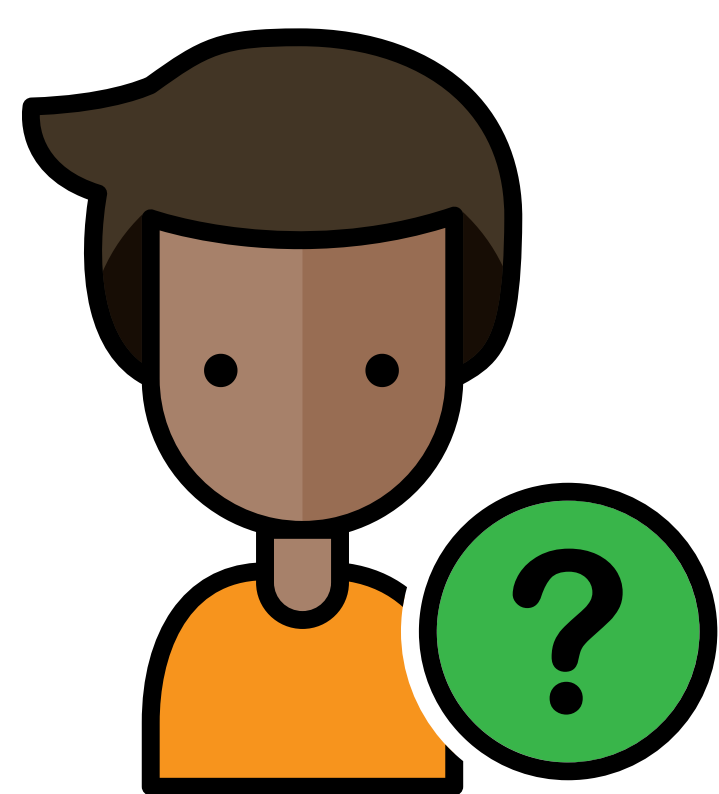


# Child Protection Medical Information for children

This information leaflet is for children to understand what to expect in a child protection medical

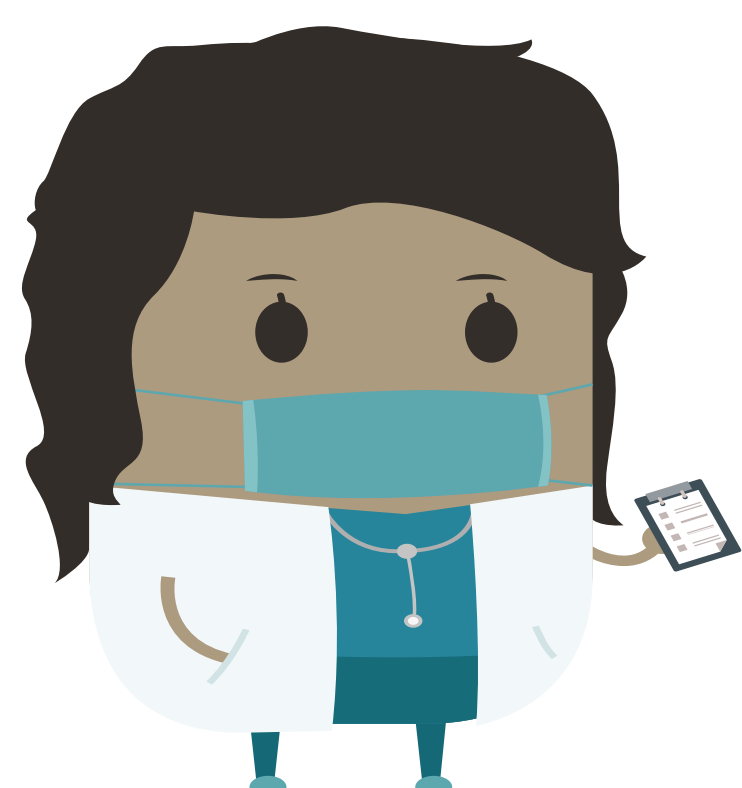
This leaflet has been produced for parents and carers to enable discussion with their children about what to expect during a Child Protection Medical.

## Why am I being seen today?



Someone is worried you might have been hurt. A children's doctor needs to see you to check.

## What happens?



The Doctor will explain what will happen. Your parent or carer can be with you, but you can also speak to the Doctor on your own if you want.

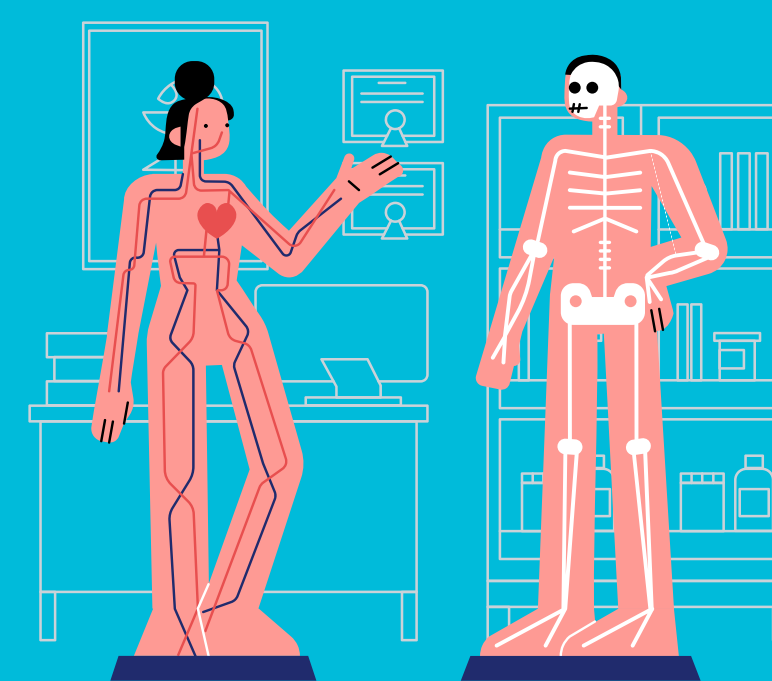
The Doctor will ask your parent/carer if they can ask questions and check you over, this is called consent.

The doctor will also ask questions about your health, you can answer these question as well if you want.

It is normal to feel a bit nervous, but the check doesn't hurt. The Doctors and nurses are there to listen to you and your Parent/carer.

## Tests and Checks that may be required

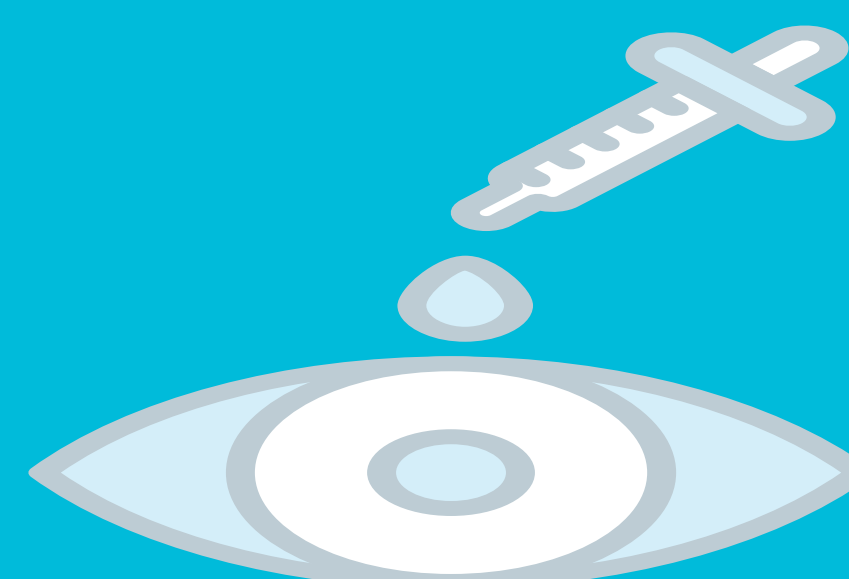
### General examination -



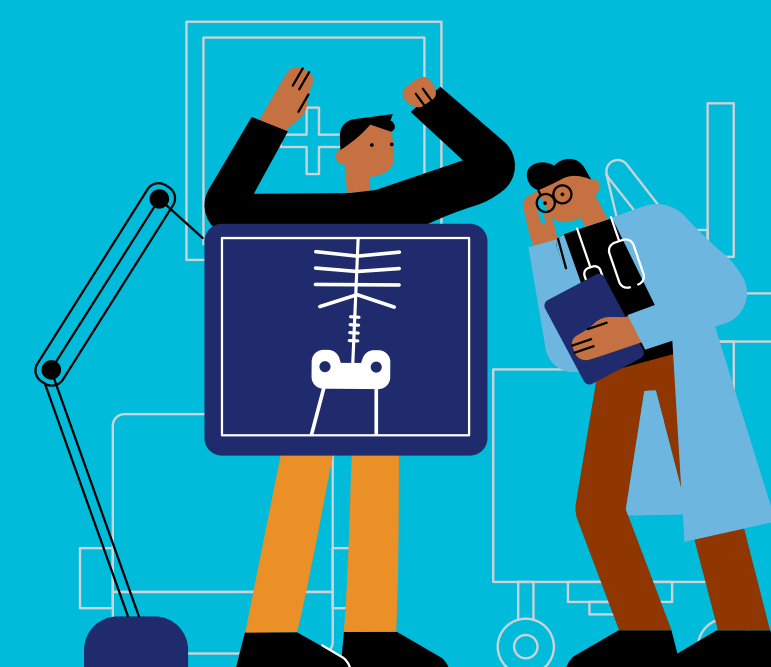
### Blood tests -



### Eye test -



### Skeletal Survey -



### CT Head Scan -



GIG  
CYMRU  
NHS  
WALES

Bwrdd Iechyd Prifysgol  
Aneurin Bevan  
University Health Board



The Doctor will listen to your heart, feel your tummy and look in your ears and mouth. They will also check your skin all over.



Your Height and Weight will be checked and recorded.



If you have any marks on your body the doctor will make a drawing and may also take photographs.

## Some of the tests may happen in hospital



If you have to go to the hospital, your parent or carer can be there. This sometimes takes a few days .

## What happens next?

The Doctor will explain to you and your parent or carer what they think at the end of the checks . A Social Worker and Doctor will decide a plan and explain what will happen next.

## Useful information

### Children's services

- Blaenau Gwent 01495 315700
- Caerphilly 08081001727
- Monmouthshire 01291 635669
- Newport 01633 656656
- Torfaen - 01495 762200

### Grange University Hospital - children's Ward

- 01633 493939
- 01633 493940
- 01633 493941

### NSPCC

[Keeping children safe | NSPCC](#)  
0808 8005000

### Child Line

[Childline | Childline](#)  
0800 1111

### NYAS

[Home | NYAS | National Youth Advocacy Service](#)  
0808 0801001



GIG  
CYMRU  
NHS  
WALES

Bwrdd Iechyd Prifysgol  
Aneurin Bevan  
University Health Board